

With extremely compact dimensions the Linealuce system guarantees minimal visual impact while the modular features enhance flexibility and adaptability.

The system literally "disappears" behind cornice and stringcourses, radiating a soft and uniform light. Linealuce finds ideal application on the outside or inside of buildings, in churches and other high vaulted interiors, as the system easily adapts to any given architectural geometries.



Linealuce pendant



Linealuce wall-mounting





Linealuce is available with a multitude of accessories including longitudinal and transversal baffles, anti-glare screens and colored filters. To ensure total safety, the Linealuce is rated IP65 protection in both upright and downright positions as well as being rated class II insulation.

Linealuce wall-mount is equipped with a practical and simple anchoring system using a manual clamp mechanism to simplify and facilitate installation and routine maintenance operations.

The photos illustrate, in sequence, the steps involved in assembling and disassembling the appliance, even in applications using continuous modules.



The pendant is an extension of the Linealuce project designed by J.W. Wilmotte. Linealuce pendant reveals new opportunities for application in border areas between indoors and outdoors, underground stations, porches etc...





This modular lighting system has been specifically designed to be used with T5 fluorescent tubes or xenon lamps. The single module is made of extruded aluminum profile end with die-cast aluminum caps, locked by stainless steel screws and fitted with a silicone gasket.

The optics bay, closed at the top by a glass screen fitted directly to the extruded profile, houses the extra-pure aluminum sheet reflector with the light source. The fluorescent system (T5) is equipped with an internal electronic ballast, while the xenon source configuration uses a thermoplastic plug-in module integral to the extruded part.

Both systems are designed for feed through wiring. Wall mounting is done by using the special anchor that allows installation of the module on uneven surfaces.

The two versions of Linealuce, can also be suspended with cable or stems.

The suspension cables are made of stainless steel and have a quick-adjusting device.

The version with stems ensures greater anchoring stability. Technical specifications of the fitting comply with EN 60598-1 standards.

This fixture is rated IP65 and UL Listed "Suitable for Wet Location"



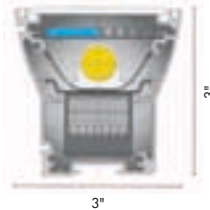


Multiple adjustable anchoring systems are available for the Linealuce. Designed to solve installation problems and preserve existing architectural statements, creating shadow free lines of light by ensuring continuity in the application.

- ① Ceiling/wall-mount application
- ② Pendant application

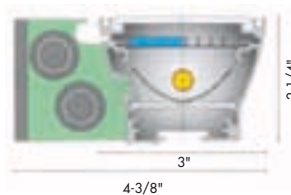
Fluorescent T5 lamps, available in various color temperatures, are particularly suitable for enhancing modern architectural details, highlighting structures and volumes, and for creating striking contrasts.

These fluorescent lamps are a new generation of 5/8" diameter light sources able to give energy savings of up to 20% compared to traditional 1" lamps (T8), all thanks to electronic control gear and improved luminous efficiency.



Length inch	Lamp T-5
	3000°-4000° 6000° K
25-1/8"	14 W
37"	21 W
48-3/4"	28 W
60-1/2"	35 W

Xenon lamps of the latest generation can be used with Linealuce to provide soft, warm, and completely uniform lighting, especially suitable for the illumination of historical buildings or structures of particular artistic merit. The use of Xenon lamps brings several benefits in terms of energy saving, lamp life (20,000h) and light quality. Moreover, these lamps emit no UV emission and can be handled with bare hands without the risk of reducing their expected life.



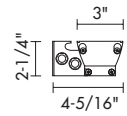
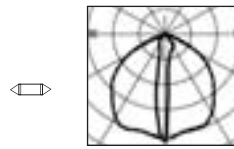
Wall-mounting/Ceiling/Pendant	
Length inch	Lamp Xenon
	2600° K
21-1/4"	6x10 W
33-7/8"	10x10 W
52-3/4"	16x10 W



Linealuce

Module complete with Xenon lamps and electronic transformer

		Length
I.7867-120	6x10 W12 V	21-1/4"
I.7867-277	6x10 W12 V	21-1/4"
I.7869-120	10x10 W12 V	33-7/8"
I.7869-277	10x10 W12 V	33-7/8"
I.7872-120	16x10 W12 V	52-3/4"
I.7872-277	16x10 W12 V	52-3/4"



accessories



Colored filters	
I.5529	20-1/2"
for I.7867	
I.5531	33"
for I.7869	
I.5534	52"
for I.7872	

Available in colors
05-06-07-09-65



Longitudinal baffle cut-off 60°	
I.5557	18-7/8"
for I.7867	
I.5559	31-1/2"
for I.7869	
I.5562	50-3/8"
for I.7872	

Available in color 02



Antiglare screen	
I.5536	21-1/4"
for I.7867	
I.5538	33-7/8"
for I.7869	
I.5541	52-3/4"
for I.7872	

Available in color 15



Transverse baffle cut-off 40°	
I.5564	18-7/8"
for I.7867	
I.5566	31-1/2"
for I.7869	
I.5569	50-3/8"
for I.7872	

Available in color 02



Longitudinal baffle cut-off 40°	
I.5550	18-7/8"
for I.7867	
I.5552	31-1/2"
for I.7869	
I.5555	50-3/8"
for I.7872	

Available in color 02

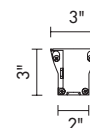
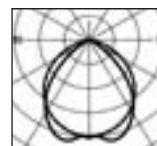
Photometric files are available at: www.sistimalux.com/photometric



Linealuce

Fluorescent module with electronic control gear

			Length
I.7862-120	14 W	T5	25-1/8"
I.7862-277	14 W	T5	25-1/8"
I.7863-120	21 W	T5	37"
I.7863-277	21 W	T5	37"
I.7864-120	28 W	T5	48-3/4"
I.7864-277	28 W	T5	48-3/4"
I.7865-120	35 W	T5	60-1/2"
I.7865-277	35 W	T5	60-1/2"



accessories



Colored filters

I.5504 for I.7862	22-1/2"
I.5505 for I.7863	34-3/8"
I.5506 for I.7864	46-1/8"
I.5507 for I.7865	58"

Available in colors
05-06-07-09-00Longitudinal baffle
cut-off 60°

I.5520 for I.7862	22"
I.5521 for I.7863	33-3/4"
I.5522 for I.7864	44"
I.5523 for I.7865	56-5/8"

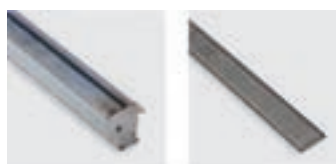
Available in color 02



Antiglare screen

I.5508 for I.7802	25-1/8"
I.5509 for I.7863	37"
I.5510 for I.7864	48-3/4"
I.5511 for I.7855	60-1/2"

Available in color 15

Transverse baffle
cut off 40°

I.5524 for I.7862	22-1/4"
I.5525 for I.7863	34-1/8"
I.5526 for I.7864	44"
I.5527 for I.7865	56-7/8"

Available in color 02

Longitudinal baffle
cut-off 40°

I.5516 for I.7862	22"
I.5517 for I.7863	33-3/4"
I.5518 for I.7864	44"
I.5519 for I.7865	56-5/8"

Available in color 02

Photometric files are available at: www.sistemalux.com/photometric

INSTALLATION SYSTEMS



① Cornice/ceiling plate
I.5570
for I.7862-I.7863-I.7867-I.7869
I.5571
for I.7864-I.7865-I.7872

Available in color 15



⑤ Brackets for balustrade mounting L=11-5/8"
I.5578

Available in color 15



② Wall mounting bracket
I.5572
for I.7862-I.7863
I.5573
for I.7864-I.7865
I.5574
for I.7867-I.7869
I.5575
for I.7872

Available in color 15



⑥ Suspension cable with power supply L=78-3/4"
I.5589

Suspension cable without power supply L=78-3/4"
I.5588



③ Arms adjustable by +/-90° L= 5-1/2"
I.5576

Available in color 15



⑦ Rod with power supply L=22-1/4"
I.5591

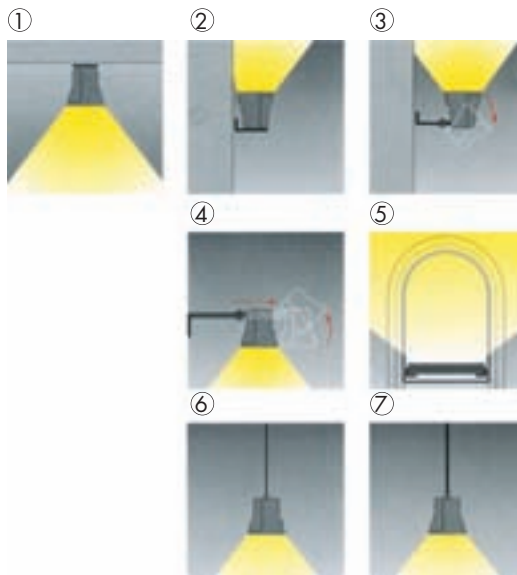
Rod without power supply L=22-1/4"
I.5590



④ Arms extendible from 12-1/8" to 15-3/8" and adjustable by +/-90°
I.5577

Available in color 15

Available in color 15



The vast range of installation systems designed for Linealuce enables a wide variety of applications designed to blend in with any architectural setting.